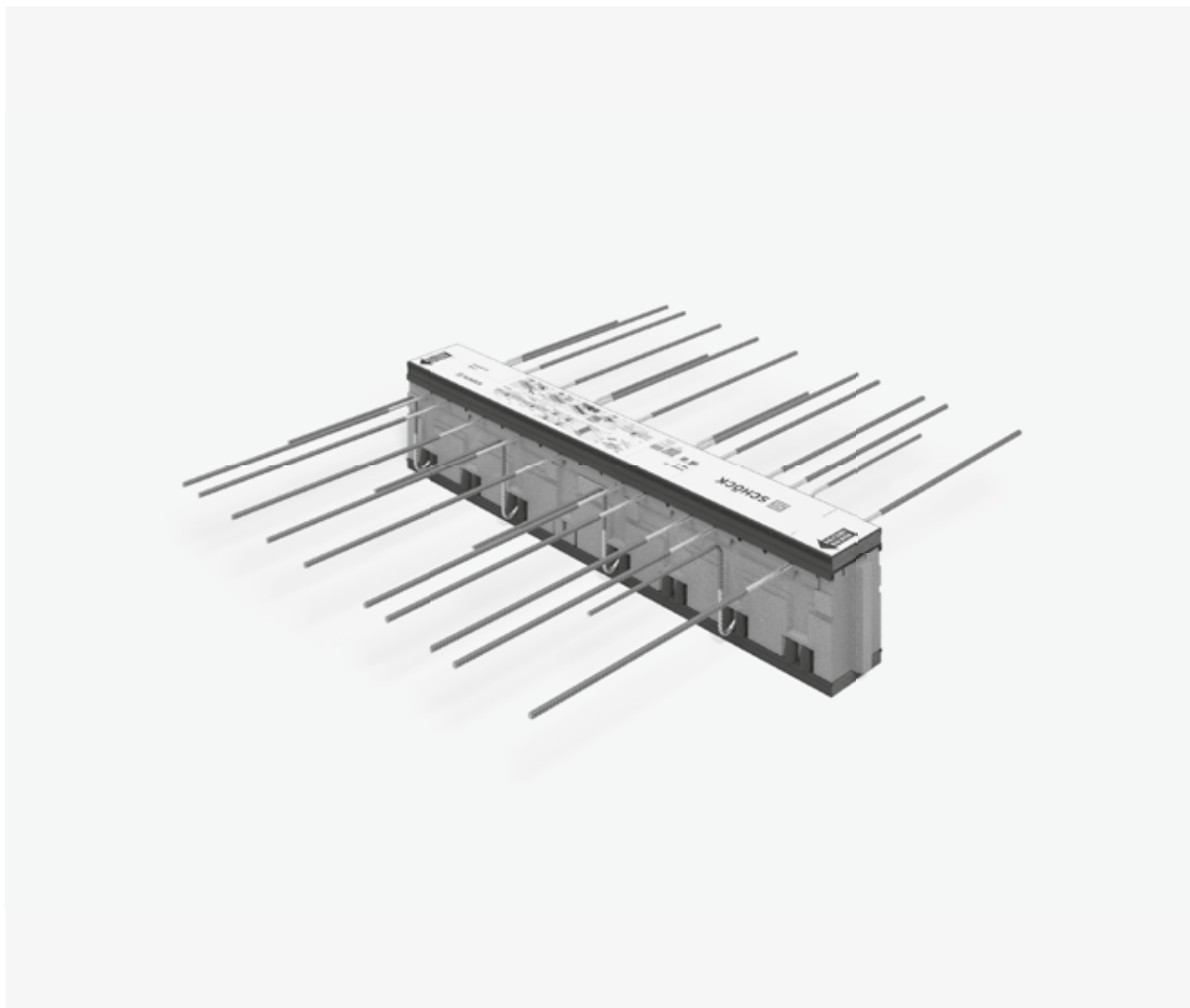


Schöck Isokorb® XT/T type K



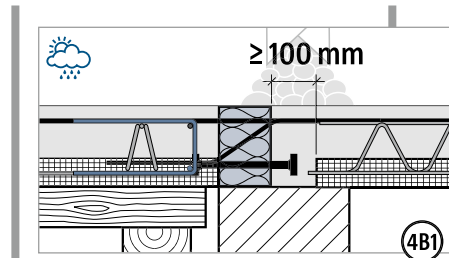
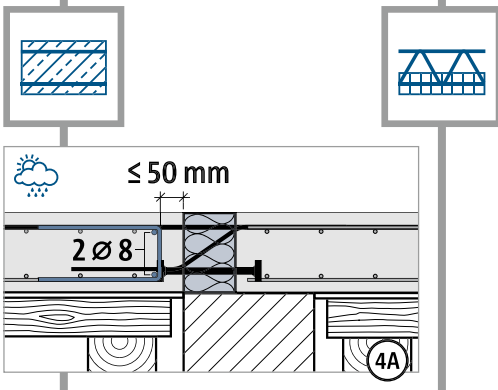
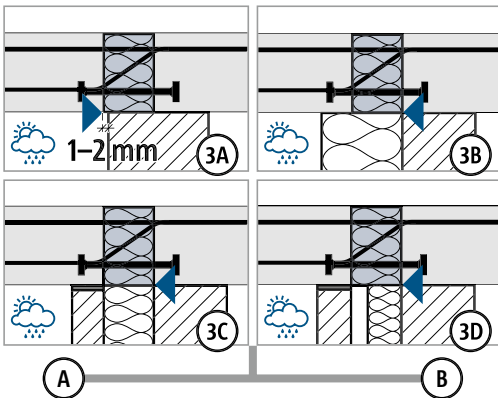
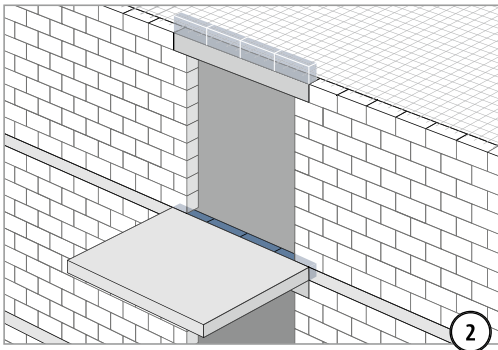
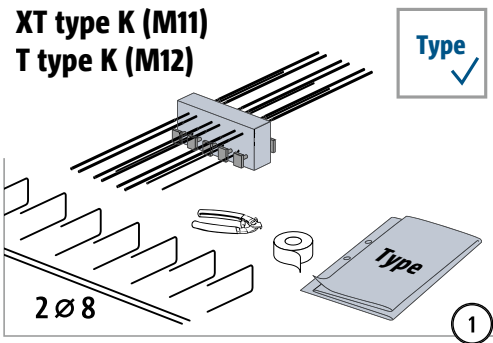
XT/T
type K

Béton – béton

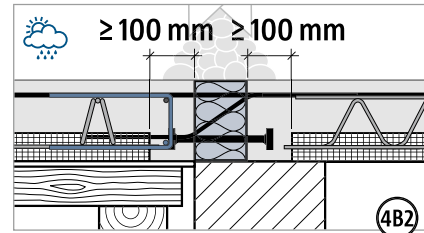
Instructions de mise en œuvre

XT/T
type K

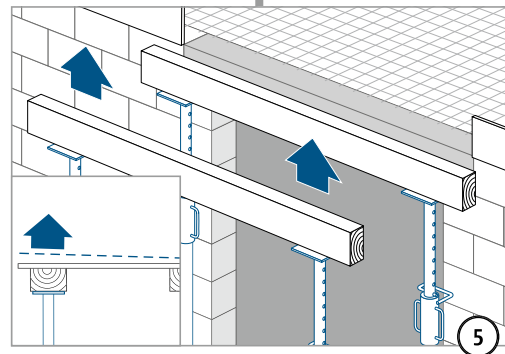
Béton – béton



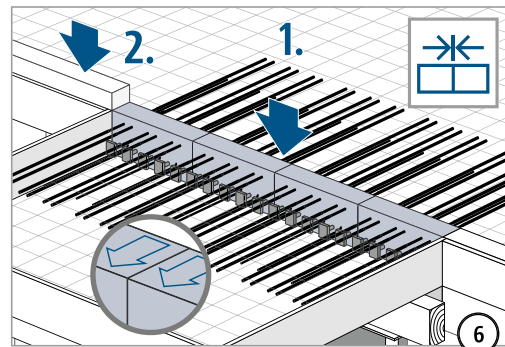
Remplir impérativement la butée de compression avec du béton coulé sur place ! Largeur du joint ≥ 100 mm.



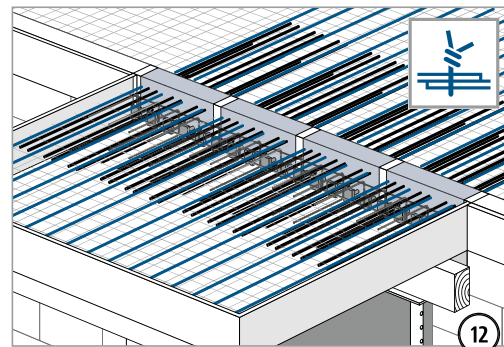
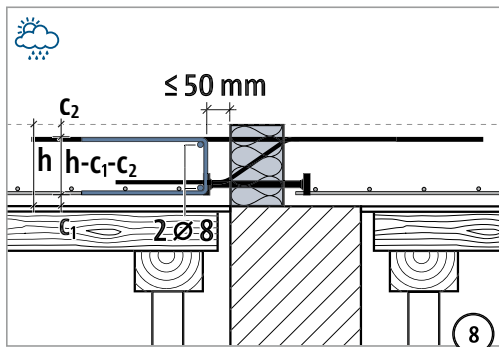
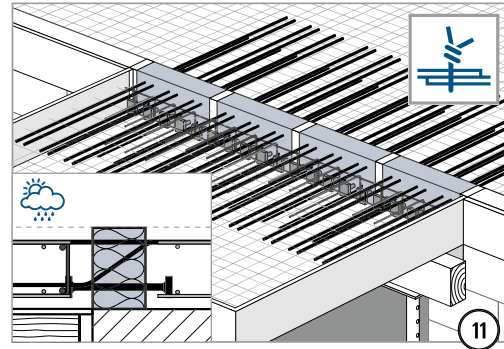
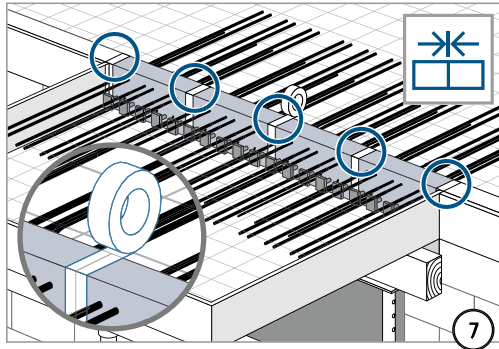
Remplir impérativement la butée de compression avec du béton coulé sur place ! Largeur du joint ≥ 100 mm.



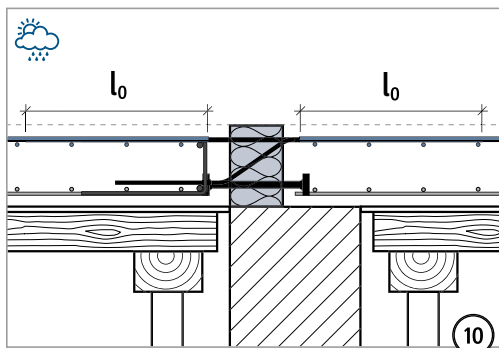
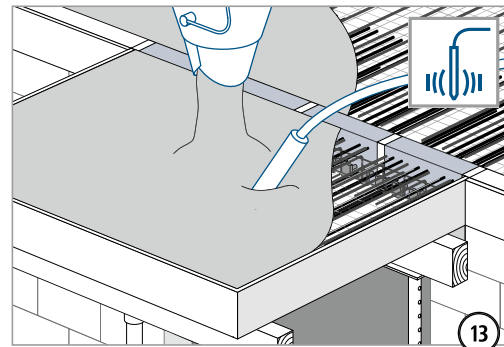
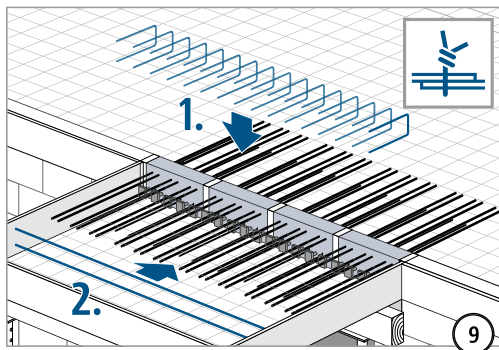
Surélever le coffrage conformément au plan d'exécution.



Instructions de mise en œuvre



L'emplacement/la hauteur côté balcon des barres d'effort tranchant varie en fonction de la hauteur et du niveau de charge du produit.

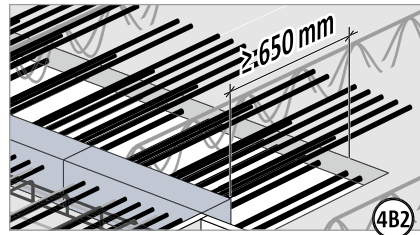
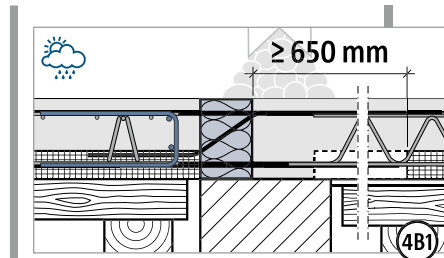
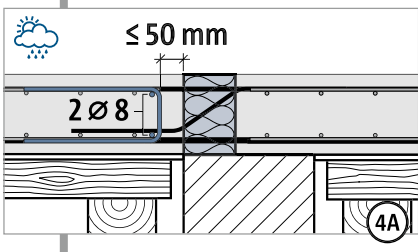
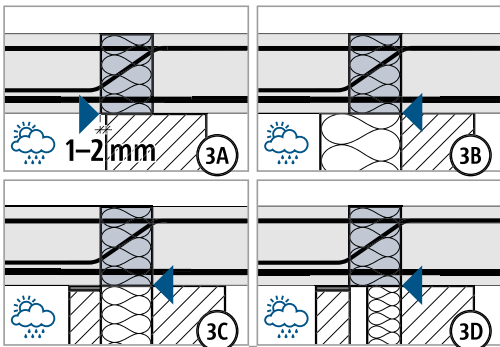
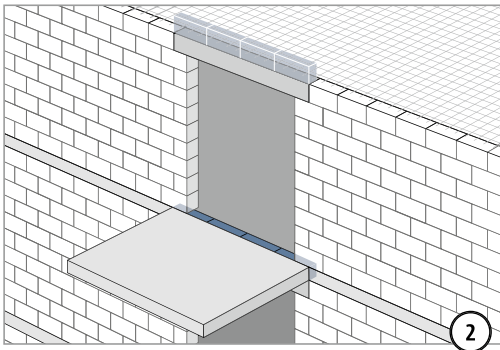
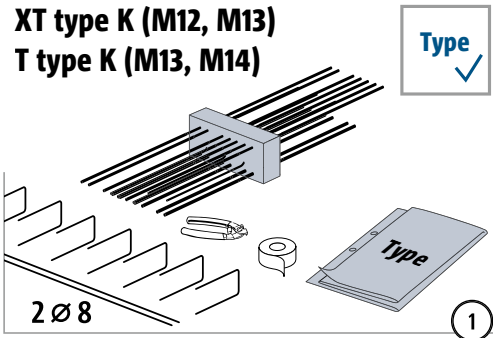
XT/T
type K

Béton – béton

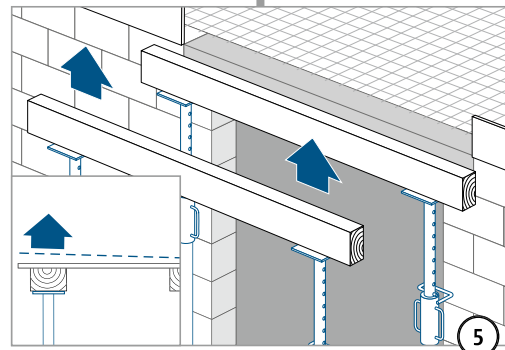
Instructions de mise en œuvre

XT/T
type K

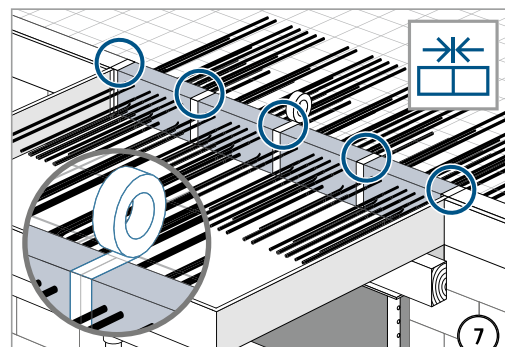
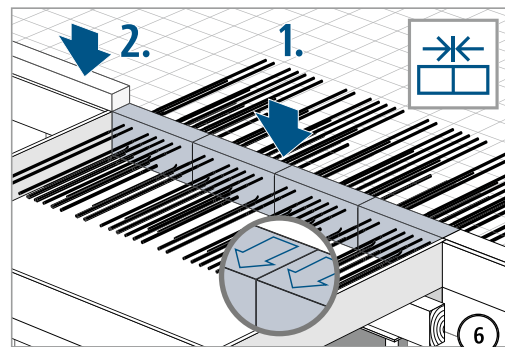
Béton – béton



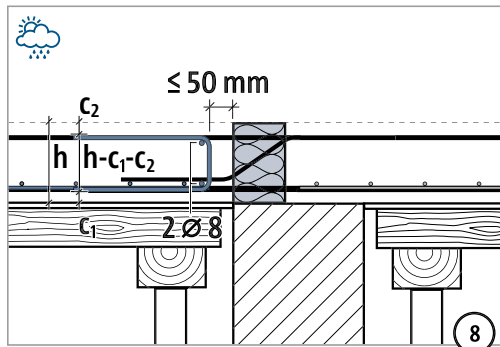
Créer un évidement dans la zone des barres de compression en cas d'une dalle semi-fini ! Évidement ≥ 650 mm



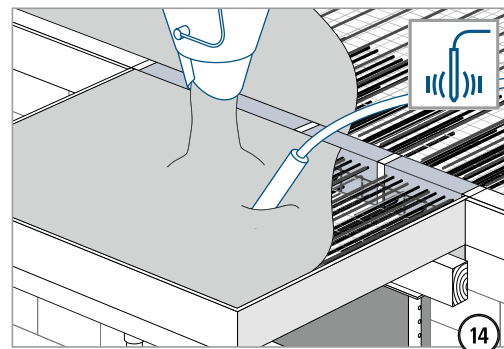
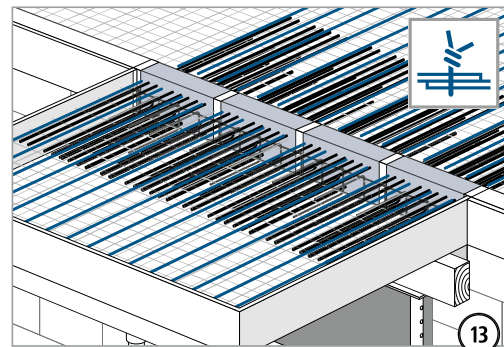
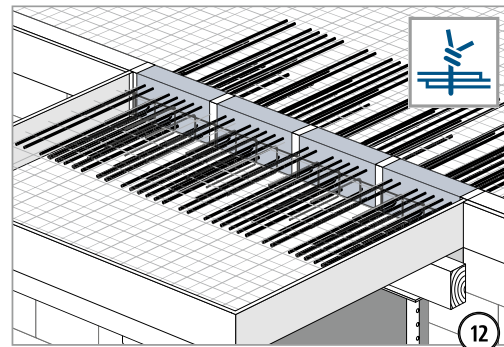
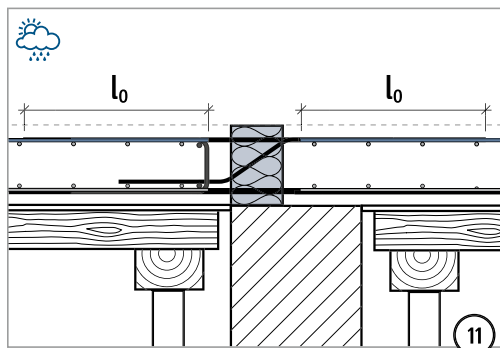
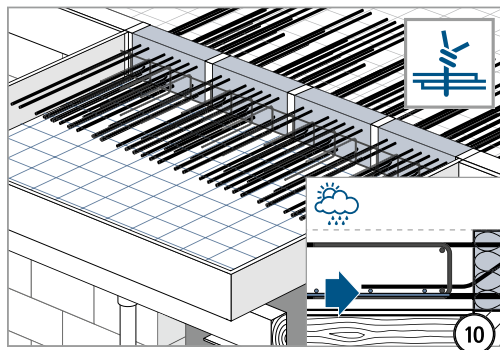
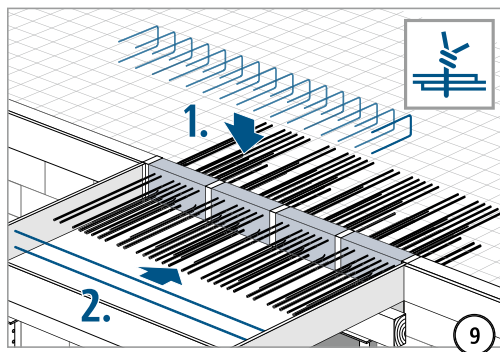
Surélever le coffrage conformément au plan d'exécution.



Instructions de mise en œuvre



L'emplacement/la hauteur côté balcon des barres d'effort tranchant varie en fonction de la hauteur et du niveau de charge du produit.



XT/T
type K

Béton – béton